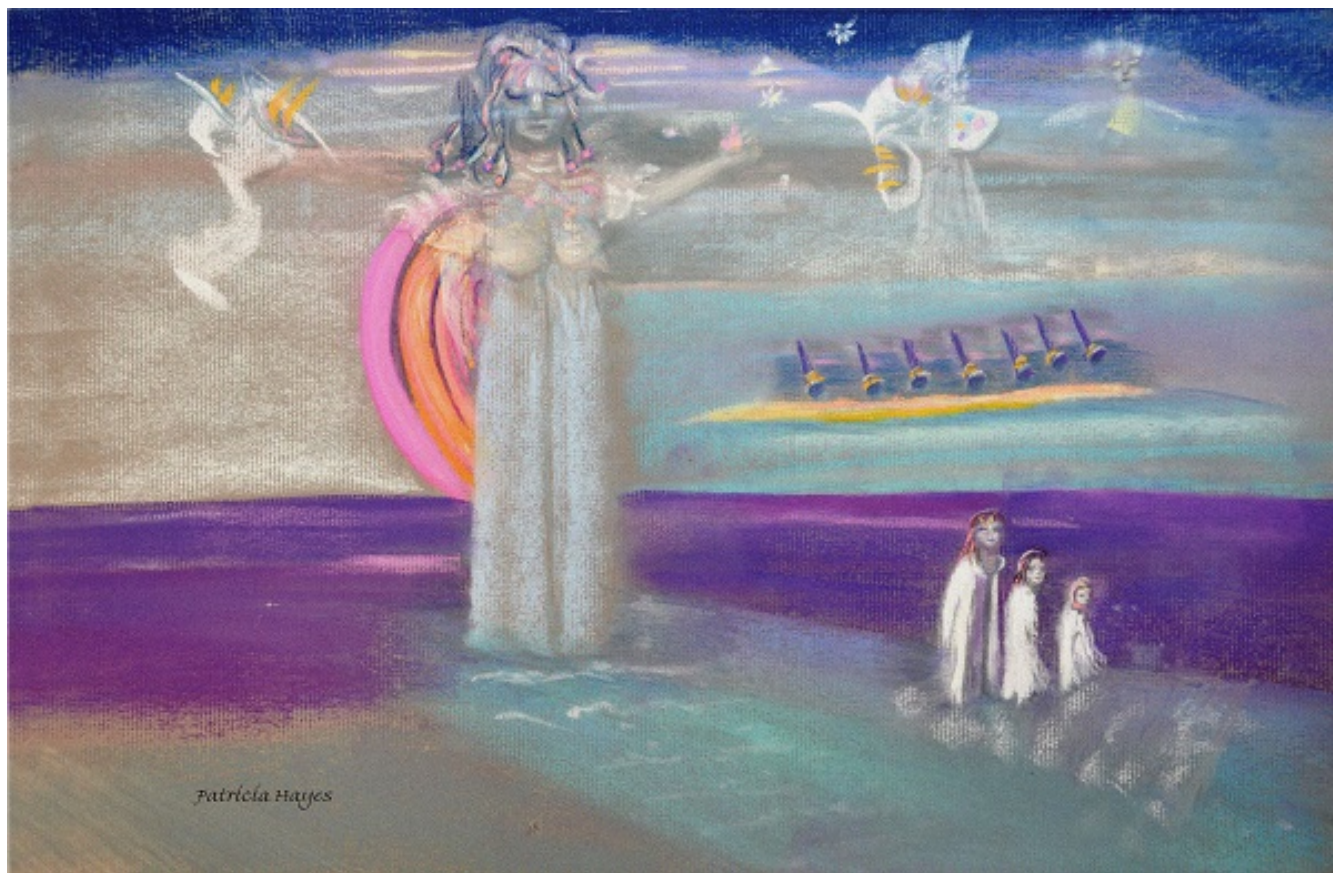




*Summer/Fall 2017*

# Delphi

*University*



*Healing Sounds of Luminara*

## **Healing Arts Journal**



## Things are on the Move Spiritually *p.3*

by Charles Curcio

*p.5*

## What is RoHun™?

by Patricia Hayes & Charles Curcio



## Integral Healing: Your Soul's Journey

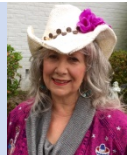
by Cheryl Wolf

*p.6*

*p.10*

## Learning to Give Ourselves

by Angela Stroup



## Dear God

by Mariya Shiyko

*p.18*

*p.19*

## Watt-Ahh The Combination of Electrons & Love

by Audrey Delahunt



## @ Delphi U

- 4 The Mauricio Panisset Healing Sanctuary
- 7 Looks of Love
- 9 Healing Stories ~ In Memorial
- 10 Inner Sanctuary Training Dates for 2018
- 12 Entura Spiritual Art Program
- 13 Delphi Class Photos
- 17 In-Depth Channeling 2018
- 18 Delphi Facility Rental
- 18 Announce Your Presence in the HAJ
- 19 Watt-Ahh – The Combination of Electrons & Love
- 19 Book Reviews –The Mystical World of Entura Art
- 20 Entura Spiritual Art Program
- 22 Healing Works Professional Association
- 25 RoHun™ Professional Association
- 29 Metaphysician Practitioner Classes for 2018
- 30 Delphi Certification, Degree & Self-Healing Programs
- 31 Delphi University 2018 Class Schedule



Marshall Smith & Patricia Hayes  
Delphi University Founders

### HEALING ARTS JOURNAL STAFF

Kimberly Hayes Curcio	Co-Editor
Charles Curcio	Co-Editor
Steve Smith	Co-Editor
Tim Shubert	Art Director

### DELPHI ADMINISTRATIVE STAFF

Kelly Hayes	Admin & Food Svc
Steve Smith	Administration
Shane Tipton	Maintenance
Bruce Buskard	Oasis Gallery
Tim Shubert	Webmaster
Danielle Tipton	Food Service
Nikki Valla	Housekeeping
Charee Shubert	Food Service
Audrey Delahunt	Luminara & Admin
Bobby Queen	Maintenance

### DELPHI INSTRUCTORS

Evi Cheung	Janice Hayes
Yvonne Christman	Elizabeth Hood
Charles Curcio	Judy Potter
Kimberly Hayes Curcio	Nancy Smith
Audrey Delahunt	Steve Smith
Linda Griffith	

### CONTACT DELPHI

#### DELPHI UNIVERSITY

940 Old Silvermine Rd.  
PO Box 70, McCaysville, GA 30555  
888-335-7448 (toll free)  
706-492-2772 706-492-5404 (fax)  
Email: [reservations@delphiu.com](mailto:reservations@delphiu.com)  
Web: [www.Delphiu.com](http://www.Delphiu.com)



# Things are on the Move Spiritually

By Charles Curcio



In case you haven't noticed, things are on the move. This is occurring in the lives of many of our Delphi Family and Friends, and many of our aware brothers and sisters on the planet. Nowhere is that in evidence more than it is here at Delphi. The energies have shifted and are continuing to accelerate in the direction of the Light. You can just feel it. Hallelujah. 2018 is on the horizon, and we expect and anticipate even more spiritual movement leading into and continuing next year.



At Delphi we have had some major things happening, about which we would like to let you know. The first of these is the new Temple of Healing, a 50+ foot tall pyramidal structure which is part of the Church of Wisdom complex here at Delphi. The new Temple will be used for a number of activities:

1. It will replace the existing Healing Sanctuary in use for the last 35 years. We have long needed a larger and more accessible facility for our healing work. The new healing sanctuary can accommodate up to 12 healers and healing tables which can be entered at ground level instead of climbing stairs, and is more convenient for access and parking. We plan to open the new healing sanctuary on Saturdays to make it more accessible and easier for people to come here.
2. We will also be teaching healing classes in the new temple and using the sanctuary to perform the healing sessions related to the class. Classes like Color and Sound Healing, Healing Mysteries, Spiritual Anatomy, and classes with a large number of students will be held there.
3. The Sanctuary is located opposite the Temple of

Wisdom. We anticipate a completion date of late Fall/early Winter, and a grand opening event early next year. More details to follow. We hope to see you there.



Another thing we would like you to know about is the revolutionary new Watt-Ahh bottled water and WIT Water Ion Technology Breathing Machine we have introduced into Delphi. Through the water and the WIT machine we have discovered a new spiritually-related technology that has been providing effective and often extraordinary forms of healing. The

water and the breathing technology were developed by a genius-level conventional scientist, Rob Gourley, and the understanding and spiritual application and effect is being provided by us. The introduction of the Watt-Ah and the WIT machine provides the perfect union of Science and Spirit, just as it was in days of old.



Watt-Ahh is electron-enhanced water. Rob has perfected a process where a significant number of electrons are added to ordinary water, thereby enhancing the electron/light content of the water itself. Electrons provide the interface and communication needed for the physical body to access the healing powers of the Etheric Body. Because of the natural affinity of the Etheric Body to the element of water (developed in the Moon period of man's evolutionary journey), the electron-enhanced water is able to increase the electronic connection between the Etheric Body and the Physical Body (which is mostly water), enabling greater access to the inherent healing powers of the Etheric Body, thus amplifying the spiritual healing of the Physical Body generated through the Etheric Body. Simply stated, the addition of greater numbers of electrons into the human energy field enhances the

connection between the Physical Body and the healing benefits of the Etheric Life Body. Watt-Ahh has provided relief for inflammation, physical injuries, oxidative stress, and physical discomfort to name a few of its benefits.

On the WIT machine, the electrons are separated from the Watt-Ahh and turned back into a gas which is breathed directly into the lungs. This technology uses Watt-Ahh Water through the WIT Water Ion Technology Machine which generates H4O2 gas or dioxytetrahydride. Using a standard tube to breath in the gas, this cutting-edge technology has created many breathing and pulmonary function benefits including healing and relief of COPD, pneumonia, and other respiratory problems. Also, since the major production of blood and immune system stem cells are located in the lungs, the electron boost provided by breathing of the H4O2 gas assists the body to help support and heal itself. Please see the Watt-Ahh article in this Healing Arts Journal.

All of us at Delphi send our love and support to you in your journey. We encourage you to embrace the "Love of Being". Being is the whole panoply of spiritual/human existence: living, loving, thinking, feeling, being, expressing, experiencing, ascending, the highs and lows, the ups and downs, and the big one, love of self. Love of Being is appreciation for who and what we are, what we do and can do, and the wonder and the miracle of our beloved God and maker. Love, Light, and Many Blessings for all that you are and in all that you do.



<http://www.ShopDelphiU.com>

**ShopDelphiU**

**Innovative ♦ Unique**

Products for Your Body, Mind & Soul



The Oasis Gallery – Delphi University  
Aleph, Inc.

**Shop Delphi U**

## The Mauricio Panisset Healing Sanctuary



The Mauricio Panisset Healing Sanctuary at Delphi was inspired by and is dedicated to the memory of this wonderful man and great spiritual being. Possessing the gift of "Light", as described by Shirley MacLaine in her book *Going Within*, Mauricio dedicated his life in service to God and

to his fellow man. His humility, love and grace will always remain a shining example to each of us, as will his gifts of light and healing which he shares on an on-going basis with all seekers of light and the students of Delphi. Join us each month in the mountains as the devoted and gifted Healers of Delphi channel the energies of Love, Light & Healing for your spiritual, mental, emotional and physical needs. Individual healing sessions are offered without charge on the first Friday of each month (Except January) at 7:30p.m. Everyone is welcome. Please wear white clothing. Call or email for more information.

## DELPHI UNIVERSITY

940 Old Silvermine Rd McCaysville, GA 30555

706.492.2772 [reservations@delphiu.com](mailto:reservations@delphiu.com)

## 2018 Healing Sanctuary Dates

Feb 2, March 2, April 6, May 4, June 1,  
July 6, Aug 3



## What is RoHun™?

Patricia Hayes, teacher, author, and founder of Delphi University of Spiritual Studies, pioneered and developed an amazing, revolutionary Transpersonal and Holistic Spiritual Psychotherapy called RoHun™. RoHun™ is an exceptional process



The Wisdom of Self-Discovery



of self-enlightenment and spiritual psychotherapy that awakens our hearts and spiritual memory.

RoHun's™ in-depth processes tap into the unconscious regions of mind surfacing and releasing negative thought constructs and emotions that restrict, limit, and continually sabotage self. Through accessing The Higher Mind, RoHun™ effectively and lovingly releases blocked energies and hidden shadows that cause chaos and preventing a joyful and productive life. RoHun begins with Ascension into higher consciousness, allowing one to view self from the highest perspective to discover, understand and transform negative energy blocks and imbalances that cause chaos within daily life. Physical ailments related to the shadows can also be healed. RoHun™ is an interpersonal therapy that utilizes an individual's spiritual strength to facilitate Healing and Transformation.

RoHun™ is a modern-day miracle, a breakthrough in integrative and cooperative healing of the body, mind, and spirit, and a Magical Journey Within to discover and be your Greatest Self. RoHun™ allows us to “see” the negative thought patterns that block our energy fields, limiting our abilities and successful endeavors as well as repeatedly attracting similar negative experiences.

RoHun lifts the veils of illusion formed through negative life experiences that block the light of our loving heart and creative thought. Lifting into their higher consciousness, then descending into depths of the lower chakras allow client and RoHun therapist to clearly discover, understand, and heal the blocks and imbalances influencing and operating within their subconscious and unconscious minds. Everything is energy. RoHun™ therapists are intuitively trained to discover and assist clients discover and break up energy blocks. While guiding and dialoging with the client, and using specific hand motions conducted above the physical body, images and thoughts from current and past negative experiences begin to appear to both client and therapist. Through understanding the cause of the faulty thought and emotions causing the block, the self-limiting energy can effectively be transformed and released. Productive and creative thoughts filled with wisdom and love are formed. Thoughts create our reality each day. RoHun inspires higher thoughts of love and wisdom to replace fear, anger, self-doubt, judgment and doubt. Understanding is the mystical key that allows us to release all that is not for our highest good. In RoHun, higher thoughts of love and wisdom replace fear-based thoughts and emotions.

RoHun™ is taught at Delphi University in the beautiful Blue Ridge Mountains in McCaysville, Georgia. Certification and Degree programs are offered and can be viewed on Delphi University's website at [www.delphiu.com](http://www.delphiu.com). The Alchemical Secret of RoHun is Self-Empowerment through Love and Wisdom



# Integral Healing: Your Soul's Journey!

## *Exploring the Multidimensional Self*

by Cheryl Wolf

The big questions of life...Who Am I? Why am I here? get even bigger when we begin to ponder cosmically, dimensionally, from our Soul's perspective!

I invite you to open to your active imagination, which is the key to accessing the higher vibration of cosmic consciousness. This is where your Soul travels to universal realms that become the reality from which you grow, learn and heal!

Begin the journey by connecting deeply within your heart to merge with your Soul's energy and access the healing, gifts and mysteries of Cosmic Consciousness! This is where you begin to experientially understand that there are multidimensional aspects of your Soul that comprise a magnificent, expansive Self.

The key is to allow yourself to be free and open to whatever your imagination brings to mind! Become aware of the inner landscape and gain an understanding of the meaning or purpose of what you discover through imaginatively and actively interacting with the symbols, images, or messages that you discover in your inner journey! Ask questions, be aware of emotions and intuitive thoughts that float in, or what you are sensing about the experience! These are the gifts that can guide your life in new and incredible ways!

Allow yourself to glean the wisdom offered in this expanded awareness, and then make your life choices from your Soul's perspective! Be bold, step forward in new ways, and enjoy the profound ways your life unfolds! These changes may take you out of your comfort zone or bring judgment, criticism, or ridicule from those who don't understand the 'new you'. This new, expansive spiritual path is to be taken one step at a time, with discernment, and with the empowerment and guidance from your own Soul!

So how do you move into this profound experience? Through engaging in a meditation practice that brings you beyond your physical world experience.

Try this! Settle into slow, rhythmic breathing, center your awareness in your body, then in your heart. Next, set your intention to connect with your Soul with a

feeling of deep gratitude and love. You can often feel the connection to higher vibration through physical experiences like tingling, pulsing, warmth, chills, etc. When this occurs, you know that you have begun to connect with an aspect of your Soul that is multidimensional in its nature, meaning that while it resides within your physical body, its origins are Divine, energetic and vibrational in other realms of existence!

Once you connect, it then becomes possible to journey, explore and understand the cosmic dimensions that are held within the Soul's vibrational nature! The images, symbols and experiences on your journey within, are unique, significant and healing. Divine Wisdom to guide you in your life is gifted to you through those experiences! To unfold even deeper meaning requires only your desire to engage, your inspiration to be open to new experiences, and your willingness to change! And what a world you will create when you bring the heavens to guide your existence on Earth!

Blessings!

## INTEGRAL HEALER



### CHERYL WOLF

*Spiritual Teacher, Healer & Counselor*

### Integral Healing

*Your Soul's Journey!*

Integral Healing of the Mind, Body and Spirit  
through expanding Spiritual Consciousness

### DISTANCE HEALING

Yes, of course, you may request energy  
healing from your home.

***Connect Today!***

**INTEGRALHEALERCWOLF.COM**

# Looks of Love



Jake Kelly (Nicole & Chris Hayes son) lending a helping hand in the Dominican Republic



Pup Pup has a new home in Chicago! And now he waits everyday on the rooftop for his new owner (and Delphi student) Celina Crisan to arrive home from work.

# New Arrivals



Congratulations to Charee & Daniel on their new arrival, a baby girl! Her name is Lily Erin Ward and she was born at 4:40am on Feb 16, 2017 weighing 7 pounds and 19 inches long. Welcome Lily!



Congratulations to Sarah & Patrick Smith on their new arrival, a baby girl! Her name is Malia Kimberly Smith and she was born at 11:55am on August 17, 2017 weighing 5.6 pounds and 19 inches long. Welcome Malia!



## Become a Delphi Angel of Healing

by Charles Curcio



With your gift of love, you can be a ***Delphi Angel of Healing***. Thanks to the generous support of our friends, students, and directors, we have made significant progress in the construction of the new Temple of Healing. We need your help to make it the rest of the way. Please join us in this wonderful endeavor. Thank you so much for your loving support. We are Many, We are One.

To make a donation, phone charge, or for more information contact us by phone at **1 888 335 7448**, or by email at [reservations@delphiu.com](mailto:reservations@delphiu.com).

Please make your check or money order payable to "The Church of Wisdom" and mail to:

**The Temple of Healing  
PO Box 1119  
McCaysville, GA 30555**

You can also make a contribution by Credit Card through PayPal or use your PayPal account if you have one. Please click on the link below:



<http://www.delphichurchofwisdom.com/>

May Angelic Blessings embrace you always,  
Charles & Kimberly Curcio, Directors







## Healing Stories

### When I Tread Into Deeper Waters, I Find Truth by Cheryl Wolf

My mind is open, I hear a faint but perceptible voice.  
It calls me to listen, to ponder, to wonder, On what, I ask?

Why on Truth, of course! Hmmm, what Truth? Which Truth?  
That is the first question to ponder! What is Truth?

This necessitates moving through layers... Layers of  
opinions...mine, parents, friends...Sorting through  
beliefs...are they Truth? Or merely what I've been told -  
learned before I knew?

Hmmm, what is it that I Know? Are the things I know  
Truth? Are facts Truth? What happens when facts contradict  
one another? What happens when new discoveries generate  
new facts?

New discoveries? ...I pause, I feel something energetically,  
Curiosity is awakened and in meditation, I peer into the void.

What awaits? ...I anticipate,

I allow inner senses to explore, Symbols, colors, sounds  
All differently communicated, differently understood.

I bring the newly discovered into the physical world.  
I journal, draw, speak about what I found,

What I sensed, what I came to understand.  
In the process, insight dawns!

Ahhh, a piece of Truth falls into place, my perspective shifts,  
I think differently, believe differently, I make new choices,  
engage in new behaviors.

I Am different. More of my Self somehow. The Truth was  
discovered in the journey, Days, months, years in the making

And as I ponder my experience...I ask myself, what is Truth?

I peer once again into the void - deeper still, listen deeply  
My journey continues and I move through gateways,

Plunging deeper into the waters of consciousness.  
There I find Truth, Over and over again.



## In Memorial

### Judith June Rovin



**Judith June Rovin**, 70 of Kailua, Hawaii, passed away peacefully in the comfort of her Kailua home in the care of her loving family and Hospice in Hawaii on Tuesday, July 25, 2017. She was born to Mary Herrel and Everett Timm in New York on June 30, 1947. Judith received a Master's Degree and Doctorates in Hypnotherapy. She held a Private Practice as a Hypnotherapist and Healer. Judith cherished her family. She is survived by her dear and loving husband Richard Rovin and their beautiful daughters, Gabriella Christina Rovin, Serena Angelina Rovin and Venicia Leilani Allen-Johnson. Along with her two darling grandchildren Caian and Elsie Johnson. Her three beloved dogs was also part of her growing family. A graveside service was held on Friday, August 4, 2017 at Hawaiian Memorial Park Cemetery.

### Rebecca J. Sweeney

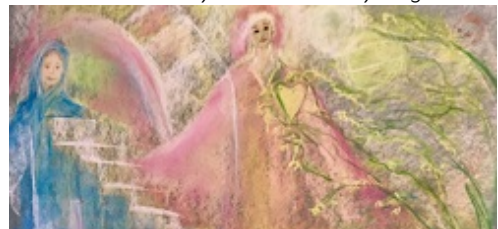


**Rebecca J Sweeney**, beloved wife, mother, sister, and friend, lost her hard fought 7 year battle with breast cancer on July 24, 2017, surrounded by family at home. She was 58 years old. Her memory will be cherished by her husband, John, and her children, Jennifer and Matthew. A special thanks goes out to her sister, Roxanne Kumagai for all her help throughout this fight.

Becky was born in Ventura, California in August, 1958 and met her husband at Castle Air Force Base, California in 1990. From there she began a 26 year journey across America. She resided in Yorktown the last 14 years. Becky was a kindergarten and pre-school teacher and loved working with children, but her greatest joy was being a mother. She was a life-long learner and active in the Healing Touch community. Becky loved hiking, kayaking and nature in all its wonders.

Below is an Entura Art drawing done for Becky by Angela Stroup about a month and a half before Becky's passing. She went to Becky's home to give her the drawing and process it with her. The drawing helped her so much to express her feelings. Entura Art is an amazing process.

*(This memorial to Becky was written by Angela Stroup.)*



## Healing Stories (cont'd)



Hi Janice,

It's been a while since I sent you a note. I am still doing the meditation every day and getting happier and happier. Fun things are happening and I'm appreciating the small things even more than before.

Some of my visits to IS are soft and flowing and some are fun and playful. I got to the fountain one day and a splash zone had been added, so I played in the splash zone before continuing!

Months ago I had a visitation by my Guardian Angel who gave me a golden, winning ticket with no numbers on it. I asked where the numbers were and he said they would come later.

After Inner Sanctuary work I was given numbers, and they're part of my creation (healthy, wealthy, happy and connected). Spirit Room now includes an allowing and receiving space, which is looking out over the Earth. I move to a cloud hammock and stay there at the end just to listen to the sounds of the Universe.

Last Sunday I was bored for few minutes at 11:11 (11+11= 22, my master number) and turned on the TV. The ad on had a guy with 22 on it. I switched channels to a women picking out numbered suitcases on a game show. They focused in on 22. I moved on to another show and the guy was winning the lottery. I hooped and hollered with the guy and laughed hysterically on the lining up of that whole series of events. I laughed about it for days.

Today I went out to do some trim work in the natural area at the front of the house. I did the trim work, left the clippers, picked up the branches and took them to the back yard. As I returned via the same path to pick up the clippers, there sat a newly deposited huge, pristine crow feather. I asked for the meaning: Magic and financial abundance. I laughed and cried at the same time.

I was listening to Abraham in the car the other day and Esther was talking about things lining up. Part of the discussion was about her finding rap on the radio system and enjoying it. The next day 2 men came to help her move furniture. One was moving back to Alabama to follow his dream of rapping. I was listening to the tape on my way back from the park, took a street I rarely take, ended up behind a car with Alabama plates, got home, made lunch and started watching a Monk rerun which just happened to be all about rapping!

I am having so much fun with all of this. My 22 has taken on a life of it's own. In my IS, they flash neon or dress up for the holiday or ride roller skates or face each other and become a huge white heart shape and they make me laugh and lighten up.

My altar keeps changing by one times being a cathedral with stained glass windows and a dove. Next huge columns of crystals, then Buddha, then Isis and back to crystals and I just feel the awe in all of it. When I stand on the crystals, I often get the face of Einstein or the face of a wolf.

Insight room is filled with wisdom and I'm handed a blank book when I enter to write my own book of wisdom!

I joined a meet-up group for "happy positive thinkers" and thought it was perfect for me, so I joined expecting it to be great. Within a few days, I got a stinging reply from the leader when I asked a question. Hmmm! Not so happy person running a happy thinkers group. Hmmm! Got clarity immediately that this was not for me.

I am listening to all nudges now and things are lining up for more and more joy.

Thank you, thank you, thank you!

Love and Light, Dr. Nancy E. Lloyd



Dear Kimberly,

Thank you for being my teacher, inspiration and guide. You have given me strength to walk the path with more grace, kindness, love, gentleness, and compassion.

I am very honored to be a part of this school and receive wisdom from you and the other teachers.

To say it has changed my life is an understatement. It has enlightened it! I treasure every piece of wisdom I receive at Delphi, but most importantly, I try to live it in my life.

With Gratitude & Love, Masha Shiyko

## INNER SANCTUARY TRAINING

Building Your Inner Sanctuary  
Establish Your Sacred Space  
Develop A Clear Sense of Purpose  
Receive Spiritual Insight  
Release Negative Emotions & Stress  
Restore Your Balance & Vitality  
Manifest Your Creative Ideas

*Your Sacred Work in Your Inner Sanctuary will continually bring Greater Love, Light, Wisdom & Peace into Your Life.*

**Course: 3 Days Cost: \$795 Includes Food & Lodging**

Call or Email Delphi to register 888.335.7448 or 706.492.2772 or registrar@delphiu.com (No prerequisite required)

**2018 Course Dates**

**Feb 8-10 Apr 7-9 May 31-June 2 Aug 4-6 Sept 20-22**



# Learning to Give Ourselves

by Angela Stroup



A few years ago as I gazed in the mirror, admiring my latest creation, a unique etched copper necklace, a small voice inside my head said, "If your doctor admires your necklace this morning during your visit, you must give it to her."

I was scheduled to see my oncologist for an appointment, and I balked at this idea. "No, darn it, I don't want to give it to her!" As usual, the voice persisted.

Many years ago I had read a small book that changed my life in a big way, "Try Giving Yourself Away" by David Dunn, originally published in 1953. Dunn suggests that we will be fulfilled in many ways if we take up his "hobby" of giving ourselves away.

He writes of his habit of expressing gratitude for the everyday things we may take for granted.

Remembering the book and how much joy I had found over the years in following his advice, I decided that I would once again follow Dunn's advice — although I secretly hoped she wouldn't notice the necklace.

Almost the first words out of her mouth were, "What a gorgeous necklace! Did you make it?" All hope of keeping the necklace was gone! But I made one last stab at keeping it by saying, "If you had a necklace like this, would you wear it?"

I hoped she would say no. "Oh, yes!" she said. I took it off my neck and gave it to her, telling her that it was now hers. Tears streamed down her face as she walked to the mirror and put it on. "You have no idea what this means to me! I dreaded coming in today. Sometimes doing my job of treating patients with cancer seems so overwhelming," she confided. "Your kindness and generosity have lifted my spirits."

Today I couldn't tell you what my necklace looked like, but I will never forget the look on her face, her gratitude, and the wonderful way I felt.

Many elders across cultures become more attentive to the meaning of their life and how to spend their remaining years. This often brings them to a deeper quest for spiritual truths. Many return to their childhood religious practices. Some explore new paths far different from their family origins, and some, like my brother Chuck, find solace and peace in nature.

Whatever path we choose gives us an opportunity to use our experience, wisdom, desire for fulfillment and spiritual growth to enhance the lives of others in meaningful ways.

At this stage in my life, being spiritual means to be of service, to show compassion, to love, to create with Spirit as my foundation. It is simple, noncommercial, noncompetitive, not organized into a religious structure, not something to attain and comes with no tangible reward.

Many speak of seeking enlightenment. There is really nothing to seek. The idea is to do. Just as Dunn advises, we can be of service by giving acknowledgment, gratitude and recognition to others in simple acts of kindness. For me, giving myself away through small acts of kindness is fulfilling.

All great spiritual traditions teach us to be fully present in the now. We are taught to love everyone, feed everyone, serve everyone, do good and be good. If we act from the place of realization that we are all the same essence just with different masks on, then we treat others as ourselves, making differences irrelevant. This is so important in the divisive climate we are sadly experiencing now. We need to know that on a deep level that everywhere we go we are meeting ourselves.

On a recent airplane flight getting ready for takeoff, I had an opportunity to give myself away. A man who appeared to be in his 30s was wiggling in his seat next to me. He pumped his legs and moved his hands oddly. During the slow taxiing, the plane stopped several times. His actions appeared quite strange. I have to admit the thought went through my head that he might be a terrorist and was preparing to die while killing the rest of us.

Finally, I said to him, "Are you nervous about flying or are you just getting some exercise?" He turned to me and whispered, "No, I am going to pee in my pants any minute."

A few minutes later he tried to get up to go to the bathroom, but received a stern warning to take his seat. I asked if he would like me to help him get his mind off his bladder until he could go to the bathroom. He agreed. I led him in guided imagery with deep breathing and helped him go to a peaceful place in nature where his body, mind, and spirit could relax, all the while sending him loving energy. This helped and when they finally let him go, he came back and thanked me profusely.

Ralph Waldo Emerson said, "Rings and jewels are not gifts, but apologies for gifts. The only gift is a portion of thyself." Author Dunn would agree. His book is now available for free as a PDF at [archive.org](http://archive.org). I highly recommend it. We need more kindness in our world.

Angela Stroup is an RN, doctor of metaphysical medicine, ordained minister, hypnotherapist, intuitive counselor and healer, retired medical school professor, and artist. Contact her at [angelaps@cox.net](mailto:angelaps@cox.net) & Rev. Angela Stroup/Facebook @creative mystic.

**Prize Winner of Arizona's Author's Association,  
Huguette Castaneda, writes a review on Prince Abba  
and Magi Patiput by Patricia Hayes**



The Adventures of Prince Abba in volume one are mighty indeed and beyond expectations. From the early age of 3, he is held in a small chamber next to King Oge as his prisoner. Rather than living his life in self-pity, he spends the next 23 years in prayer and meditation until he is freed. During his

many experiences, he discovers that there are many ways that we imprison ourselves during many lifetimes. He discovered it was easy to live in divine energy secluded but in duality, all is different. He meets a teacher, Magi Patiput, who guides and instructs him in the ways to discover and remember who he truly is. There is first the world of humanity and later many dimensions and beings of Light who assist him in his remembrance. But first one cannot learn that the divine source is loving and caring when one has experienced only pain and suffering. He meets a soul mate to journey along with him. Learning true love is healing. Later other travels will unearth the ingrained misconceptions and distorted beliefs and perceptions that caused his spirit to be enchained. Thoughts are creations. They manifest in disease, pain and fear or in the joy of living, abundance and comfort. Not only are they the energies to direct in this life but also in the other planes of life. All is energy whether on earth or in the plane of light and darkness. One can only ascend as far as he is willing to descend in the depths of darkness. We must be able to retrieve all the parts lost in the world of duality to become whole to mirror again the image of the source.

The book is a great guide to understand our process in Yhandi as we search and heal our inner child and adult. Most especially it is a guide that shows you how to heal the different aspects of self that Ro-Hun will reveal. It will give an in depth understanding of the multi-faceted self.

The book is a true gift for those on the path to in-lightment. Now get ready to be moved as Abba continues his journey into the dimensions of Light and Shadow. Where will they take him?

All of you that have been waiting for Patricia's new book : The Mystical Adventures of Abba 11 (volume 2 and 3 included) will be happy to know that it will be available very soon. Look forward to learning about Parallel Realities from Cosmic Beings, Abba's near death experience and much more. Reserve your signed copy now at registrar@delphi.com

## **The Entura Spiritual Art Program at Delphi University**

### **Level I**

Entura Art I

May 4-8, 2018

\$1695 Includes Lodging & Meals

### **Entura Art II**

**May 8-11, 2018**

**\$1295 Includes Lodging & Meals**

### **Entura Art III**

For Graduates of Entura Art II only

Sept 9-13, 2018

\$1695 Includes Lodging & Meals

### **Entura Art IV**

For Graduates of Entura Art III only

Sept 13-17, 2018

\$1695 Includes Lodging & Meals

### **Level II**

#### **In-Depth Channeling**

Feb 10-17 March 31-April 7 June 2-9 July 28-Aug 4

Sept 22-29 Nov 3-10, 2018 (8 days)

Tuition - \$2475 Includes Lodging & meals

#### **Advanced Channeling**

Feb 17-21 June 9-13 Sept 29-Oct 3, 2018 (5 days)

Tuition - \$1975 Includes Lodging & meals

#### **Entura Art Symbols & Interpretation I**

May 11-13 & Nov 1-3, 2018 (1 day, 9:30-5:30)

\$895 Includes Lodging & Meals

#### **Entura Art V**

March 9-13 & Oct 12-16, 2018

\$1695 Includes Lodging & Meals

### **Level III**

#### **Healing Mysteries**

Feb 25-March 3 June 17-23 Oct 7-13, 2018 (7 days)

Tuition \$2475 Includes Lodging & meals

#### **Integrated Healing Arts**

June 23-27, 2018 (5 days)

\$1695 Includes Lodging & Meals

#### **Entura Art Symbols & Interpretation II**

March 9, 2018 (1 day, 9:30-5:30)

\$335 Includes Lodging & Meals

#### **Entura Art VI-Advanced Art & Sound Therapy**

Nov, 2018 (5 days)

\$1695 Includes Lodging & Meals

**See the Entura Spiritual Art Institute & Program article  
for further information.**



## *Delphi Class Photos*



### **In-Depth Channeling Feb 11-18, 2017**

Back L-R: Ryan Frederick, Hugo Vendeiro, Rhonda Bakle, Dawn Chiles-Casey, Kermit Weeks, Meylin Chavez, Cheryl Engledow, Shelley Lapkoff, Donna Sobredo, Svetlana Singletary Frt L-R: Anne de Riocour, Amy Hodnett, Jennifer Stanford, Jessica Pedroza, Kimberly Curcio, Sharonne Mincey, N/P Wendy Pajak



### **Advanced Channeling Feb 18-22, 2017**

April Atlas, Kermit Weeks, Dee Beckler, Katie Swartz, Svetlana Knurbein, Kimmi Sterk, Holly Marek, Mariya Shiyko, Jessica Pedroza, Debra Enox, Huguette Castaneda, Kimberly Curcio



### **Color & Sound Healing Feb 22-26, 2017**

Back L-R: April Atlas, Huguette Castaneda, Debra Enox, Kimmi Sterk, Charles Curcio Frt: Holly Marek, Ken Franklin



### **Healing Mysteries Feb 26-March 4, 2017**

Huguette Castaneda, Debra Enox, Lyn Slavin, Holly Marek, Charles Curcio, Jessica Caves, Kimmi Sterk, Dorine Bucci, Hedy Gurrentz



### **Inner Sanctuary Training February 9-11, 2017**

Wendy Pajak, Judy Potter, Meylin Chavez, Hugo Vendeiro



### **In-Depth Channeling April 1-8, 2017**

Robbi Wilson, Alicia Daniel, Angela Johnson, Gail Caldwell, Zuki Chowdhry





**Inner Sanctuary Training April 8-10, 2017**

Nancy Lloyd, Janice Hayes, Andrea Ashley, Emily Capps, Ian King, Emily Jane Smith, Sheila Mitchell, Tricia Saborio-Koike



**Yhandi April 18-24, 2017**

Heidi Domeisen, Judy Potter, Huguette Castaneda



**Soul Logos April 10-14, 2017**

Laura Purnell, Bridget Anderson, Debra Enox, Linda Griffith, Karen Miraldi, Lori Diebold



**Crystal Healing I April 24-26, 2017**

Charles Curcio, Dina Shaaban Saade, Monica Morin, Kimberlee King, Ivy Shulman, Susan Arcy



**Male/Female Mysteries April 14-18, 2017**

Karen Miraldi, Kimberly Curcio, Laura Purnell



**Crystal Healing II April 26-29, 2017**

Dina Shaaban Saade, Kimberlee King, Susan Arcy, Monica Morin, Charles Curcio





### Transpersonal Hypnotherapy I May 1-6, 2017

Dina Shaaban Saade, Deryn Higgins, Yvonne Christman, Marie Davis, Linda Tinson



### Entura Art III May 9-13, 2017

Nayla El Mansab, Yvonne Christman, Huguette Castaneda, Angela Stroup, April Atlas, Lora Naratil



### May Entura Art I May 2-6, 2017

Liliya Aleksandrova, Angela Stroup, Hedy Gurrentz, April Atlas, Nayla El Mansab, Huguette Castaneda, Joyce Knutson, Julie Brent



### Enture Art Symbols & Interpretation I May 13-15, 2017

Nayla El Mansab, Elizabeth Hood, Huguette Castaneda, Lora Naratil, April Atlas



### May Entura Art II May 6-9, 2017

Nayla El Mansab, April Atlas, Evi Cheung, Angela Stroup, Elizabeth Hood, Huguette Castaneda, Hedy Gurrentz, Liliya Aleksandrova



### Entura Art IV May 16-20, 2017

Huguette Castaneda, April Atlas, Yvonne Christman, Nayla El Mansab,





#### Inner Sanctuary Training June 1-3, 2017

Tricia Quinn, Debbie Beebe, John Witkie, Judy Potter, Alex Bravo, Kathryn Faulkner



#### Color & Sound Healing June 14-18, 2017

Bridget Anderson, JoAnn Kisler, Mariya Shiyko, Nayla El Mansab, Jennifer Stanford, Svetlana Singletary, Mary Rose Benner, Charles Curcio



#### Healing Mysteries June 18-24, 2017

Norin Thomas, Bridget Anderson, Joanne Kisler, Charles Curcio, Nayla El Mansab, Mariya Shiyko, Mary Rose Benner

#### In-Depth Channeling June 3-10, 2017

Back L-R: Nikki Valla, John Turner, Andi Locke Mears, Jennifer Avery, Beth Waller, Anne Tucker, Teresa Thomas, Nancy Adams  
Frt L-R: Suzanne Packard, Heather Powell, Kimberly Curcio, Alexis Harris, Ian King



#### Advanced Channeling June 10-14, 2017

Back: Ian King, Nikki Valla, Rhonda Bakle, Tanya Pinto, Svetlana Singletary  
Frt: JoAnn Kisler, Jennifer Stanford, Kimberly Curcio, Mary Rose Benner



#### RoHun I & II June 10-18, 2017

L-R: David Robertson, Tracy Gromen, Bianca Baudendistal, Hedy Gurrentz, Kimberlee King, Huguette Castaneda  
Frt: Kimberly Curcio



# In-Depth Channeling



from the *Arthur Ford Academy at*

## Delphi

Professional Training in:

Channeling  
Color Energies  
Energy Healing  
Energy Sensitivity  
Intuitive Counseling  
Mediumship  
Initiate Training  
Meditation  
Human Energy Fields &  
Chakras

Past Life Regression  
Photograph Reading  
Pranic Breathing  
Psychic Readings  
Psychic Sensitivity  
Psychic Training  
Psychometry  
Sacred Sound  
Spiritual Art

### 2018 Training Seminars

Feb 10-17 ~ March 31-April 7 ~ June 2-9  
July 28-Aug 4 ~ Sept 22-29 ~ Nov 3-10

### 2017 Training Seminars

Nov 4-11



*Delphi ~ Where Sacred Energies Meet Nature's Beauty*

More Information online at [Delphiu.com](http://Delphiu.com)

*Tuition for this 7-day intensive program is \$2,475 & includes class materials, food, & lodging at our beautiful campus and spiritual retreat in the Blue Ridge Mountains where Georgia, North Carolina, and Tennessee meet.*

## Dear God

By Mariya Shiyko



When I write a letter to God, I get quiet and go inside...

What I Hear is God addressing me back saying,  
Thank you for deciding to be brave,  
Trusting in Spirit to transcend the illusion of  
separateness.

You are even sweeter because of all the struggles  
and hurdles on your path.

You are nectar because you've tasted bitterness.  
You are sunshine because you've walked in the dark.

You are ease because you've carried  
struggle on your shoulders.

You are pure love because you've drank  
hatred and blame.

You know your purity because you've  
witnessed imperfection.

You recognize your clarity because you have been lost.

You find your guidance within the depth of your heart.

You show bravery and compassion  
when your human is hurting.

How can You be Me?

How can I be You?

I fall in humbleness when I think of the possibility,  
Yet every time I listen to my heart, I hear a determined  
"Yes. You are. I am."

Not out of grandiosity or delusion, but out of humility.

A little droplet of God's compassion,  
brilliance, joy and creativity.

Oh, how I love your laughter!

It rings bells of a thousand stars,  
cutting through veils of delusion.

My dear one, this is a letter to you, to myself.

Because You have dared to walk this  
human path with honor.

You have chosen to be brave, love and cry,  
fall and rise again,

Abandoning your ideas of perfection – to see  
God in all there is.

Who are you not to be God?

Thank you for trusting yourself and finding Me in You.

God, Thank you!

Thank you, Human!

## Announce Your Presence

The Delphi Healing Arts Journal can help you to let other people know who you are and all that you have to offer, such as a healing practice, private readings, classes and workshops. Now you can advertise in the Healing Arts Journal. Our publication reaches around the world through mail, email and Delphi's website to all students, inquiries, and visitors to Delphi.

The cost for placement of your pre-designed business card size ad is \$35 per issue (two issues per year, one print & one web only). We offer other options, sizes, and ad space that can meet your individual needs. Print ready ads must be received by November 15<sup>th</sup> for the January issue and May 15<sup>th</sup> for the July issue.

Please contact the Delphi offices for ad specifications, space availability, and payment details.

Phone: 706.492.2772

Email: [registrar@delphiu.com](mailto:registrar@delphiu.com)

## Delphi Facility Rental



If you have ever had a vision of holding your workshop or retreat in a Paradise of Nature, we invite you to realize that vision with us at Delphi.

For more information, please  
email [reservations@delphiu.com](mailto:reservations@delphiu.com)  
or call 888.335.7448

## Watt-Ahh

### The Combination of Electrons & Love

by Audrey Delahunt



Watt AHH beautiful day it was when we received the WIT Machine (Water Ion Technology) at Luminara Wellness Center. We have been anxiously awaiting the day that we could introduce this amazing device. Now here we are a month later and what has this month shown us? We have watched people receive unique and special healing results, many for chronic problems. We have seen anxiety shift into a sense of inner peace, numerous respiratory issues that traditional medicine had not resolved turn around and start to get back on the healing track, and we have received feedback from people on resting better, becoming more mentally alert, and experiencing reduced inflammation in the body. Accelerated healing seems to be the most common observation and result.

I jumped for joy when my friend came back for a second session. When I asked her what she noticed from the last one she said "You know I have felt all my life like I was rarely at 100%, and after my first session I didn't feel anything special until I realized I felt I was running on 100%". When I heard that I was thrilled for her, and I knew what it meant, it meant that her brain was opening up all 12 pathways as the gas was providing her with O2 to support the cells as well as the mitochondrial functions.

When I describe it to Delphinians I tell them that the Watt-Ahh in the WIT machine creates a gas that moves through your system dismantling toxins. I see it like a RoHun cleanse for the body. Then there are the Electrons that are have been added to the Watt-Ahh. This is water charged with Electrons, which makes Watt-Ahh unique among all waters and the first of its kind. So why is this so important, that the water and the WIT are filled with electrons? Electrons are forms of Light Energy. Humans are made up of energy. When we get low on energy we get sick, dis-ease moves in, and we lack the energy to bounce back and recover like we did when we were younger. The addition of greater numbers of electrons into the human energy field enhances the connection between the Physical Body and the healing benefits of the Etheric Life Body.

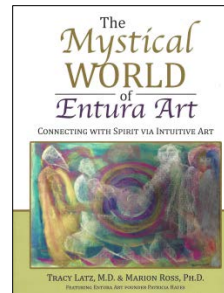
On the WIT Machine, the Electron-charged water is now turned back into a gas that carries the electrons directly into your respiratory system and lungs, where a large amount of T-cells live. With the inhalation of the

electron gas, we are now super charging those T-cells, so the results are faster healing, more stamina, and your body starts to repair what was damaged before the electrons were replenished. I really understood what Mauricio (The Man of Light) was doing in his healings with Brother Lights. Through his light he was filling his clients with Electrons, which super charged the body back to wellness.

That is why healing occurred so often. His intent was to energize the Sacred Self, and everything else would fall into place. Where RoHun™ detoxifies thoughts and feelings, the WIT Breathing Machine helps heal the adverse physical effects. Where the process of Light Energization™ supercharges the energy system with electrons, so too does the consumption of Watt-Ahh. The positive effects of Watt-Ahh are complementary with our systems of energy healing, a combination that makes for an awesome experience, regardless of whether you are healthy or having issues. The WIT machine and Watt-Ahh were destined to be at Delphi University. It's a cutting edge combination of Spirit and Invention. We would love for everyone to experience what this amazing water can do for you. As one doctor in Florida said, "It cures what ails ya".

## The Mystical World of Entura Art

Drs. Latz and Ross take you on a journey into the amazing world of Entura Art developed by Patricia



Hayes, where the realms of the invisible world are manifested. Whether you enjoy looking at beautiful pieces of art or you are an advanced metaphysical student, peering into this artwork is piercing the veil into the spirit as well as the heart, soul, and archetypal energies of mankind.

This unique intuitive art process may be utilized for investigating past, present, or future situations (medical conditions; relationship issues, or lessons regarding personal circumstances), connecting to Source, or for receiving answers or directions from the Soul of the self, loved ones (living or deceased), or pets.

Tracy Latz, M.D. is an investigative psychiatrist & certified medical intuitive, metaphysician & holistic healer.

Marion Ross, Ph.D. is a holistic healer, metaphysician, transpersonal psychologist and is certified in mind body medicine.

Both doctors have successful integrative, healing and psychotherapy practices that utilize Entura Art as one of many tools for the clients and students. This book is dedicated to the Entura Artist in us all.





## Entura Spiritual Art Institute

Delphi University is very pleased to launch the Entura Spiritual Art Institute and its new degree programs that incorporate the profound modality called Entura Art, developed and advanced by Patricia Hayes. The Entura Spiritual Art Institute offers a multiple level course curriculum that teaches the aspiring Entura Artist in the theories, techniques, and therapy modalities of healing one's self and others using Transpersonal Art.

**What is Entura Art?** Entura means "entering the aura," or, in other words, entering the energy field. The Entura Artist is taught to enter the energy field of his/her subject – one's self, another person, a place or thing, a past or present time period, or a spiritual concept like love, harmony, and wisdom – to channel and convey intuitive understanding and messages related to that subject and to bring about needed and appropriate emotional and spiritual healing. Entura Art is an artistic form of alchemy that transmits both psychological and spiritual precision by way of symbols and colors that flow onto the canvas.

**What is a Transpersonal Art Therapist?** A Transpersonal Art Therapist provides enlightenment and opportunities for healing for self and others using Entura Art symbols, exercises, color, sound, and various art media to connect directly to the Divine Source of one's being – and, in so doing, find clarity, understanding, and meaning. The processes and techniques used by the Transpersonal Art Therapist bypasses the critical factors of rational thinking and mind chatter to attune one to his/her creative and intuitive nature.

The art serves as a record of the events that individual has been exploring. The Transpersonal Art Therapist helps the individual expand upon and understand the images and symbols that arise, relating their meaning to the issues or intent of that individual. The individual is then able to reflect on his/her artwork to understand his/her life event or situation with greater clarity.

Our eyes are our window to the Universe. And, our "inner eyes," that is, our inner sight, is the means of intuitive understanding and spiritual growth. Entura Art combines our inner and outer sight into a beautiful and profound means of intuitive expression. The Entura Artist simply allows his/her hand to be directed by a Higher Guidance, knowing that the energy and appropriate intuitive understanding will be conveyed to the paper using soft pastels. ***No artistic training or ability is required to be a powerful Entura Artist.***

**"A picture is worth a thousand words."**

~ Old Adage

It is true! A picture, a visual image, can convey deep and complex ideas, arousing subconscious feelings and emotions. It can bring a new and surprising level of understanding to the Entura Artist who understands and to the Entura Artist's clients. With Entura Art, the artist is trained to be a clear channel of energy, to allow his/her hands to be directed by a Higher Guidance, and to use his/her intuitive impressions and knowledge of symbols to realize a deeper level of "knowing" and understanding that emerge on paper about any number of topics and issues for him/herself and others. S/he becomes the vehicle for communication, healing and growth whether it is reconciling emotional conflict arising from the past or the present, expanding spiritual awareness, exploring high concepts, or sustaining personal connection and communication with the Higher Realms.

As the student continues in his/her Entura Art studies, s/he experiences on a deep heartfelt level just how art unifies us all to reveal and understand God's iconic memorandum. It is the universal language that touches the soul of all who listen to and feel the strokes and color of motion, knowing that, from this motion, s/he is extracting the messages of truth imprinted on the ethers.

As a form of therapy, Entura Art has meaning to a variety of people and ages – children, teens, adults, couples and seniors – helping each to reveal unconscious or emotionally-charged feelings that may be impossible to access by talking alone.

Each level of study in the Entura Spiritual Art degree program takes the Entura Artist into deeper and wider awareness, sharpens intuitive clarity and accuracy, and engages him/her in a powerful visual medium that brings insightful healing.

## Entura Spiritual Art Program Transpersonal and Psychospiritual Art

### Level 1 – Entura Artist

**Entura Art I – Intuitive Channeling and Clearing through Art.** The first Entura Art class introduces the process of intuitively tapping into one's self, another person, or a concept, and expressing those intuitive messages through soft pastels. No previous art experience is required because the Entura Art student is taught to transcend traditional art techniques and allow the hand to be guided by his/her own intuitive channel. In this class, Entura Art is used to clear blocks and negative emotions, realize new levels of awareness about self, and give readings to others. Fun and Insightful!

**Length of Course:** 5 Days

**Course Tuition:** \$1,695 includes lodging and meals

**Entura Art II – Opening the Creative Zone.** Entura Art 2 discusses the Entura Artist as the Mystic, expanding and refining the Entura Artist's abilities and self-awareness while opening up his/her intuitive channels to the Creative Zone, that is, broader spiritual connections and additional means of expressing spiritual communication. In this class, the Entura Artist also learns the art of Soul Portraits while expanding his/her refinement techniques and interpretation skills.

**Length of Course:** 4 Days

**Course Tuition:** \$1,295 includes lodging and meals

**Entura Art Symbols and Interpretation I.** This course delves into key symbols that surface in channeled Entura Art, their spiritual meaning, and how the symbol and its placement in the drawing influence the interpretation of a drawing. In addition, the Entura Artist learns and practices valuable interpretation skills to enhance his/her ability to effectively interpret an Entura Art drawing, deepening the meaning and understanding of each channeled message.

**Length of Course:** 3 Days

**Tuition:** \$895 includes lodging and meals

**Entura Art III – Attuning to Higher Energy.** In this course, the Entura Artist learns specific subtle energy anatomy designed to access and channel from a higher electromagnetic frequency, enhancing and deepening the artist's intuitive channeling and spiritual communication, as well as his/her ability to capture

more refined images from deeper spiritual sources using specific hand movement techniques. In addition, the Artist perfects his/her ability to channel and interpret Soul Portraits. Moving and mystical, the Entura Artist moves into a new realm of receiving, channeling and expressing spiritual communication through Entura Art drawings.

**Length of Course:** 5 Days

**Tuition:** \$1,695 includes lodging and meals

### **Entura Art IV – Advanced High Energy Attuning.**

Entura Art IV takes the Entura Artist into new and deeper channeling, attuning to precise cellular memory, and moving into even higher and more progressive electromagnetic frequency channels. Advancing his/her abilities to capture beautiful, refined images of even higher, deeper spiritual messages, the Entura Artist becomes an Adept at connecting with the highest spiritual energy, communicating messages from high spiritual sources, and creating unique and beautiful pastel expressions of that channeling.

**Length of Course:** 5 Days

**Tuition:** \$1,695 includes lodging and meals

**At the conclusion of Level One, the student is:**

- *Certified as an Entura Artist*
- *Eligible to register in the Association of Entura Spiritual Artists as an Entura Artist (annual renewal required for inclusion in the Delphi online directory)*

### Level 2 – Bachelor of Entura Art

**In-Depth Channeling.** A prerequisite to all Delphi degree programs, In-depth Channeling is one of the key foundations of spiritual practice, helping the student develop, refine, and express spiritual gifts and intuitive abilities, using time-proven methods to become a clear, accurate, and consistent channel of love, light, and healing. This course may be taken during Level 1 studies.

**Length of Course:** 8 Days

**Tuition:** \$2,475.00 - includes lodging and meals

**Advanced Channeling.** Designed to awaken and enhance spiritual memory and sight, and to strengthen one's spiritual channel, this intensive training includes the study of the history and practices of Ancient Mysteries, while intimately studying and purifying one's mental/emotional auric field and transmuting Karmic energies that limit spiritual progress and permanent

healing. In addition, Sola, the skills of advanced soul travel, and Soul Life Readings practices are reviewed in this course. In-depth Channeling is a prerequisite to this course.

**Length of Course:** 5 Days

**Tuition:** \$1,975.00 - includes lodging and meals

**Entura Art Symbols and Interpretation II.** As the Entura Artist advances in his/her abilities to connect and channel spiritual messages, the symbols become more expressive with richer, deeper, and more insightful meaning. This course discusses advanced Entura Art spiritual symbols and delves into deeper levels of interpreting Entura Art drawings.

**Length of Course:** 1 Day

**Tuition:** \$335 - includes lodging and meals

**Entura Art V – Art and Sound Therapy.** The Entura Art V course teaches a profound healing therapy, designed to discover, understand, and heal the “Special Self,” that core part of one’s psyche that limits one’s progress toward realizing a full and prosperous life, finding and sustaining greater spiritual connection, and walking the path of a life purpose fulfilled. This modality uses specific sounds and channeled images to stir and access deeper life-limiting thoughts and feelings for purposes of discovery and insight to bring about this healing for one’s self or others.

**Length of Course:** 5 Days

**Tuition:** \$1,695 - includes lodging and meals

**At the conclusion of Level 2, the Entura Art student is awarded:**

- *Certification in Mediumship*
- *Certification as a Soul Life Intuitive*
- *Bachelor of Arts Degree B.A. in Transpersonal and Psychospiritual Arts*
- *Eligible to register in the Association of Entura Spiritual Artists as a BA and Entura Art Therapist (annual renewal required for inclusion in Delphi online directory)*

### Level 3 – Master of Entura Art

**Healing Mysteries.** This course begins with a study of the Astral World and its inhabitants, looking at the effect the Astral World has on the physical world. In addition, the student is trained in a variety of integrative and complementary healing therapies that include crystal healing, lotus healing, past life

regression, psi-scan, subliminal and distance healing, and trance healing, the channeling of Spirit Doctors for the purpose of healing.

**Length of Course:** 7 Days

**Tuition:** \$2,475.00 – includes lodging and meals

**Integrated Healing Arts.** As a powerful means of discovering and healing, Entura Art is a natural complement to the modalities learned in Healing Mysteries. In this course, the Entura Art Therapist learns specific ways to incorporate Entura Art into the metaphysical healing modalities learned in Healing Mysteries so that his/her clients may discover and understand what imbalanced energy needs to be healed and to deepen the healing with additional understanding and insights about moving forward.

**Length of Course:** 5 Days

**Tuition:** \$1,695.00 – includes lodging and meals

**Entura Art VI – Advanced Art and Sound Therapy.** This course advances the therapy work with the “Special Self” learned in Entura Art V. It uses Entura Art and music to transform the “Special Self” into a force for positive thought and healthy manifestation in the client’s life. The therapy addresses and heals any lingering issues the “Special Self” continues to create, then carries the client through a process to transform the “Special Self,” giving it a new role of assisting the client toward his/her life purpose and being the point of positive creation in the client’s life.

**Length of Course:** 5 Days

**Tuition:** \$1,695.00 - includes lodging and meals

**At the conclusion of Level 3, the Entura Art student is awarded:**

- *Certification as a Spiritual Healer*
- *Master of Arts Degree M.A. in Transpersonal Healing Art Therapies*
- *Eligible to register in the Association of Entura Spiritual Arts as an Entura Artist and Entura Art Therapist (annual renewal required for inclusion in Delphi online directory)*



# Become a METAPHYSICIAN PRACTITIONER

## A three-level Program of Certification as a Spiritual Healer

- A Keeper of the Light and a Channel of Spiritual Knowledge & Energy
- Uses the Forces of Love, Light, and Healing to help others
- Has acquired the Knowledge, Skills, Wisdom & Experience to enable him or her to Guide, Support, and Assist All who step on their path

### Advanced Channeling

This intensive Training includes the Study of the History and Practices of the Ancient Mysteries including:

- History and Practices of the Ancient Mysteries
- Building the Temple of Higher Learning
- Sacred Symbology
- Astral Light and Transfiguration
- Karma, The Wheel of Rebirth
- Cleansing of Emotional/Mental Energetic System
- Soul-Life Readings
- Sola - Advanced Soul Travel and Advanced Channeling
- Dharma - Daily Spiritual Practice

**Length of Course: 5 days**

**Tuition: \$1975**

(includes food & lodging)

ADVANCED CHANNELING

201,

**Feb 17-21**

**June 9-13**

**Sept 29-Oct 3**

### The Mysteries of Color & Sound

This intensive training is a study of the Metaphysical Mysteries of Color and Sound Healing and the Human Energy System, and includes:

- Characteristics, effects and causes of imbalance & disease
- Relationship of Color, Sound, and our Energy Systems
- Color Therapies, Visualization, & Manifestation
- Common ailments and their beneficial colors
- The Healing Properties of Sound & Color
- Toning and Healing using the Voice
- Healing with tuning forks
- The role of music for healing
- Healing mantras/Sacred language
- The Color and Sound Healing Technique and Therapies

*\*Certification as a Color and Sound Healer*

**Length of Course: 5 days:**

**Tuition: \$2,295**

(includes food, lodging & course materials)

COLOR & SOUND 201,

**Feb 21-25**

**June 13-17**

**Oct 3-7**

### The Healing Mysteries

Metaphysical study of Healing, Medical Intuitive Training, the Astral World, and the Study of Thought forms including:

- Basics of Crystal Healing
- Integrative Healing Therapies Processes for healing specific problems and ailments
- Lotus Healing - Releases energy blocks for balancing and restoring physical energy and health
- Past Life Regression Therapy - Access the unconscious for spiritual knowledge, healing of current problems, and soul abilities
- Psi-Scan - Intuitive medical process of investigation for physical, emotional, mental and spiritual health
- Subliminal and Distance Healing - Learning to channel and project healing energy over great distances
- Trance Healing - The channeling of Spirit Doctors for healing
- The Astral Plane – Inhabitants, Thoughtforms, Uses and Effects in Healing

*\*Certification as a Spiritual Healer*

**7 day course: \$2,475**

(includes food & lodging)

HEALING MYSTERIES 201,

**Feb 25-March 3**

**June 17-23**

**Oct 7-13**

Upon completion of all three courses you will earn Certification as a Metaphysician from  
DELPHI UNIVERSITY OF SPIRITUAL STUDIES

# CERTIFICATION, DEGREE AND SELF-HEALING PROGRAMS AT DELPHI

In Depth Channeling/Arthur Ford School - Certification in Mediumship Awarded

(Prerequisite for the Metaphysician & RoHun Programs)

<p><b>Metaphysician Practitioner Program</b> Complementary &amp; Alternative Medical Therapies &amp; Transpersonal Healing</p> <p style="text-align: center;"><b>Level 1</b></p> <p style="text-align: center;"><b><u>Metaphysician Certification</u></b></p> <p>Advanced Channeling Color &amp; Sound Healing The Healing Mysteries <i>Certification as a Soul Life Intuitive</i> <i>Certification as a Color &amp; Sound Healer</i> <i>Certification as a Spiritual Healer in Trance</i> <i>Healing, Past Life Regression Therapy, &amp; Lotus</i> <i>Healing</i> <i>Certification as a Metaphysician Practitioner</i></p> <p style="text-align: center;"><b>Level 2</b></p> <p style="text-align: center;"><b><u>Master Metaphysician Certification</u></b></p> <p>Transpersonal Healing Mysteries of Soul Logos Mysteries of Male/Female Healing Yhandi - Adult/Child Integration <i>Certification in Sacred Healing &amp; as an</i> <i>Akasha Sensitive</i> <i>Certification in Relationship Dynamics</i> <i>Certification as a Yhandi Practitioner</i> <i>Certification as a Master Metaphysician</i></p> <p style="text-align: center;"><b>Level 3</b></p> <p style="text-align: center;"><b><u>Doctor of Metaphysics Certification</u></b></p> <p>Integrative &amp; Preventative Medical Therapies Spiritual Anatomy &amp; Energization I Spiritual Anatomy &amp; Energization II Holistic Healing System* <i>*Prerequisites: Inner Sanctuary Training</i> <i>(may be taken anytime) and Inner Sanctuary</i> <i>Instructors Training (may be taken any time</i> <i>after Mysteries of Soul Logos)</i> <i>Certification as a Kundalini Energization™</i> <i>Healer</i> <i>Certification as a Reflective Etheric Healer</i> <i>Certification as a Holistic Practitioner</i> <i>Certification as a Doctor of Metaphysics &amp;</i> <i>Healing Mh.D</i> <i>Ministerial Ordination in the Church of Wisdom</i> <i>(\$100 fee)</i></p>	<p><b>RoHun™ Therapy Program</b> Transpersonal Psychology</p> <p style="text-align: center;"><b>Level 1</b></p> <p style="text-align: center;"><b><u>RoHun™ Therapist Certification</u></b></p> <p>RoHun™ I - RoHun Cards RoHun™ II - Purification RoHun™ III - Advanced Purification/Group RoHun™ RoHun™ IV - Shadows/Caged One Process <i>Certification as a RoHun Card Facilitator</i> <i>Certification as a RoHun™ Therapist</i> <i>Ministerial Ordination in the Church</i> <i>of Wisdom (\$100 fee)</i></p> <p style="text-align: center;"><b>Level 2</b></p> <p style="text-align: center;"><b><u>Master RoHun™ Therapist Certification</u></b></p> <p>RoHun™ Masters I – Seven Visions RoHun™ Masters II - Androgynous Mysteries of Male/Female Healing <i>Certification in Relationship Dynamics</i> <i>Certification as a Master RoHun™ Therapist</i></p> <p style="text-align: center;"><b>Level 3</b></p> <p style="text-align: center;"><b><u>RoHun™ Doctorate Certification</u></b></p> <p>Spiritual Anatomy &amp; Energization™ I Spiritual Anatomy &amp; Energization II RoHun™ Doctorate I - Constructs RoHun™ Doctorate II - Tanks/Medical Relationships <i>Certification as a Kundalini Energization™</i> <i>Healer</i> <i>Certification as a Reflective Etheric Healer</i> <i>Certificate of RoHun™ Doctorate Course</i> <i>Completion</i> <i>Certification as a Doctor of RoHun™ Rh.D*</i> <i>*(upon completion of doctoral thesis)</i></p>	<p><b>Entura Spiritual Art Institute</b> Transpersonal and Psychospiritual Art</p> <p style="text-align: center;"><b>Level 1</b></p> <p style="text-align: center;"><b><u>Entura Art Certification</u></b></p> <p>Entura Art I – Intuitive Channeling and Clearing Entura Art II – Creative Zone Entura Art III - Energy Attunement Channeling Entura Art Symbols and Interpretation I Entura Art IV - Advanced Energy Attunement Channeling</p> <p><i>Certification as an Entura Artist</i></p> <p style="text-align: center;"><b>Level 2</b></p> <p style="text-align: center;"><b><u>Bachelor of Arts B.A. in Entura Transpersonal</u></b> <b><u>Art Healing</u></b></p> <p>In-Depth Channeling Advanced Channeling Entura Art Symbols and Interpretation II Entura Art V – Art and Sound Therapy <i>Certification in Mediumship</i> <i>Certification as a Soul Life Intuitive</i> <i>Certification as an Entura Art Therapist</i> <i>Bachelor of Arts B.A. in Transpersonal &amp;</i> <i>Psychospiritual Arts</i></p> <p style="text-align: center;"><b>Level 3</b></p> <p style="text-align: center;"><b><u>Master of Entura Spiritual Art</u></b></p> <p>Healing Mysteries Integrated Healing Arts Entura Art VI – Advanced Sound and Art Therapy <i>Certification as Spiritual Healer</i> <i>Master of Arts M.A.in Transpersonal Healing</i> <i>Arts Therapies</i></p>
--	--	---

## Delphi University Degree Programs

**Bachelor of Science B.S. in Metaphysical Healing** – awarded to students who have completed Level 1 in both the Metaphysician and RoHun™ Programs.

**Master of Science M.S. in Transpersonal Psychology** – awarded to students who have completed Levels 1 and 2 in both the Metaphysician and RoHun™ Programs.

**Doctor of Science Ph.D. in Complementary and Alternative Medical Therapies** – awarded to students who have completed Levels 1, 2, and 3 in both the Metaphysician and RoHun™ Programs.

**Bachelor of Arts B.A. in Transpersonal & Psychospiritual Arts** - awarded to students who have completed Levels 1 and 2 in the Entura Spiritual Art Program.

**Master of Arts M.A. in Transpersonal Art Therapy** - awarded to students who have completed Levels 1, 2, and 3 in the Entura Spiritual Art Program.

Delphi University 940 Old Silvermine Road, PO Box 70 33055 33055 Phone 706-492-2772

Toll Free 1-888-335-7448 335-7448 www.delphiu.com 335-7448 registrar@delphiu.com



# Delphi University 2018 Class Schedule

<b>FEBRUARY</b>		<b>JULY</b>	
<b>3</b>	Energies of 2018	<b>22-27</b>	RoHun Doctorate I
<b>8-10</b>	Inner Sanctuary Training	<b>AUGUST</b>	
<b>10-17</b>	In-Depth Channeling	<b>July 28-4</b>	In-Depth Channeling
<b>17-21</b>	Advanced Channeling	<b>4-6</b>	Inner Sanctuary Training
<b>21-25</b>	Color & Sound Healing	<b>6-10</b>	Mysteries of Soul Logos
<b>25-March 3</b>	Healing Mysteries	<b>10-14</b>	Male/Female Mysteries
<b>21-27</b>	RoHun Masters I	<b>14-20</b>	Yhandi
<b>MARCH</b>		<b>20-26</b>	Spiritual Anatomy & Energization I
<b>3-5</b>	Voyager Tarot Certification Class	<b>26-30</b>	Inner Sanctuary Instructor Training
<b>3-5</b>	Revelations I	<b>4-8</b>	RoHun III
<b>5-7</b>	Revelations II	<b>8-12</b>	RoHun IV
<b>9</b>	Entura Art Symbols & Interpretation II	<b>SEPTEMBER</b>	
<b>9-13</b>	Entura Art V	<b>Aug 31-Sep 4</b>	RoHun Doctorate II
<b>APRIL</b>		<b>4-8</b>	Therapy Analysis (RoHun Doctorate Grads)
<b>March 31-7</b>	In-Depth Channeling	<b>7-9</b>	Entura Art Symbols & Interpretation I
<b>7-9</b>	Inner Sanctuary Training	<b>9-13</b>	Entura Art III
<b>9-13</b>	Mysteries of Soul Logos	<b>13-17</b>	Entura Art IV
<b>13-17</b>	Male/Female Mysteries	<b>20-22</b>	Inner Sanctuary Training
<b>17-23</b>	Yhandi	<b>Sept 22-29</b>	In-Depth Channeling
<b>23-27</b>	Therapy Analysis (Yhandi Grads)	<b>Sept 29-Oct 3</b>	Advanced Channeling
<b>23-25</b>	Crystal Healing Part I	<b>Sept.29-Oct 1</b>	RoHun I
<b>25-28</b>	Crystal Healing Part II	<b>OCTOBER</b>	
<b>7-13</b>	RoHun Masters II	<b>Sept 29-Oct 3</b>	Advanced Channeling
<b>MAY</b>		<b>3-7</b>	Color & Sound Healing
<b>4-8</b>	Entura Art I	<b>7-13</b>	Healing Mysteries
<b>8-11</b>	Entura Art II	<b>14-20</b>	Spiritual Anatomy & Energization II
<b>11-13</b>	Entura Art Symbols & Interpretation I	<b>20-27</b>	Holistic Healing System Graduation
<b>May 31-Jun 2</b>	Inner Sanctuary Training	<b>27-31</b>	Entura Art VI Advanced Art & Sound Therapy
<b>JUNE</b>		<b>Sept 29-Oct. 1</b>	RoHun I
<b>May 31-Jun 2</b>	Inner Sanctuary Training	<b>1-7</b>	RoHun II
<b>2-9</b>	In-Depth Channeling	<b>NOVEMBER</b>	
<b>9-13</b>	Advanced Channeling	<b>3-10</b>	In-Depth Channeling
<b>13-17</b>	Color & Sound Healing	<b>10-14</b>	Mysteries of Soul Logos
<b>17-23</b>	Healing Mysteries	<b>14-18</b>	Male/Female Mysteries
<b>21-28</b>	CWS-Holistic Healing Program	<b>10-14</b>	RoHun III
<b>23-27</b>	Integrated Healing Arts	<b>14-18</b>	RoHun IV
<b>9-11</b>	RoHun I		
<b>11-17</b>	RoHun II		

## Connecting with Spirit Weekends

Are held the First Friday Weekend of every month (except January):

Friday Evening – Mauricio Panisset Healing Sanctuary 7:30pm (please wear white)

Saturday – Spiritual & Healing Workshops 10:00am–1:00pm (topics change monthly)

Sunday – Inspirational Service at the Temple of Wisdom 10:30am

Food, Lodging, & Accommodations are available at Delphi for CWS Weekends

For more information, please contact us at 1-888-335-7448 or 706-492-2772

Email [reservations@delphiu.com](mailto:reservations@delphiu.com) Visit us online at [www.delphiu.com](http://www.delphiu.com)